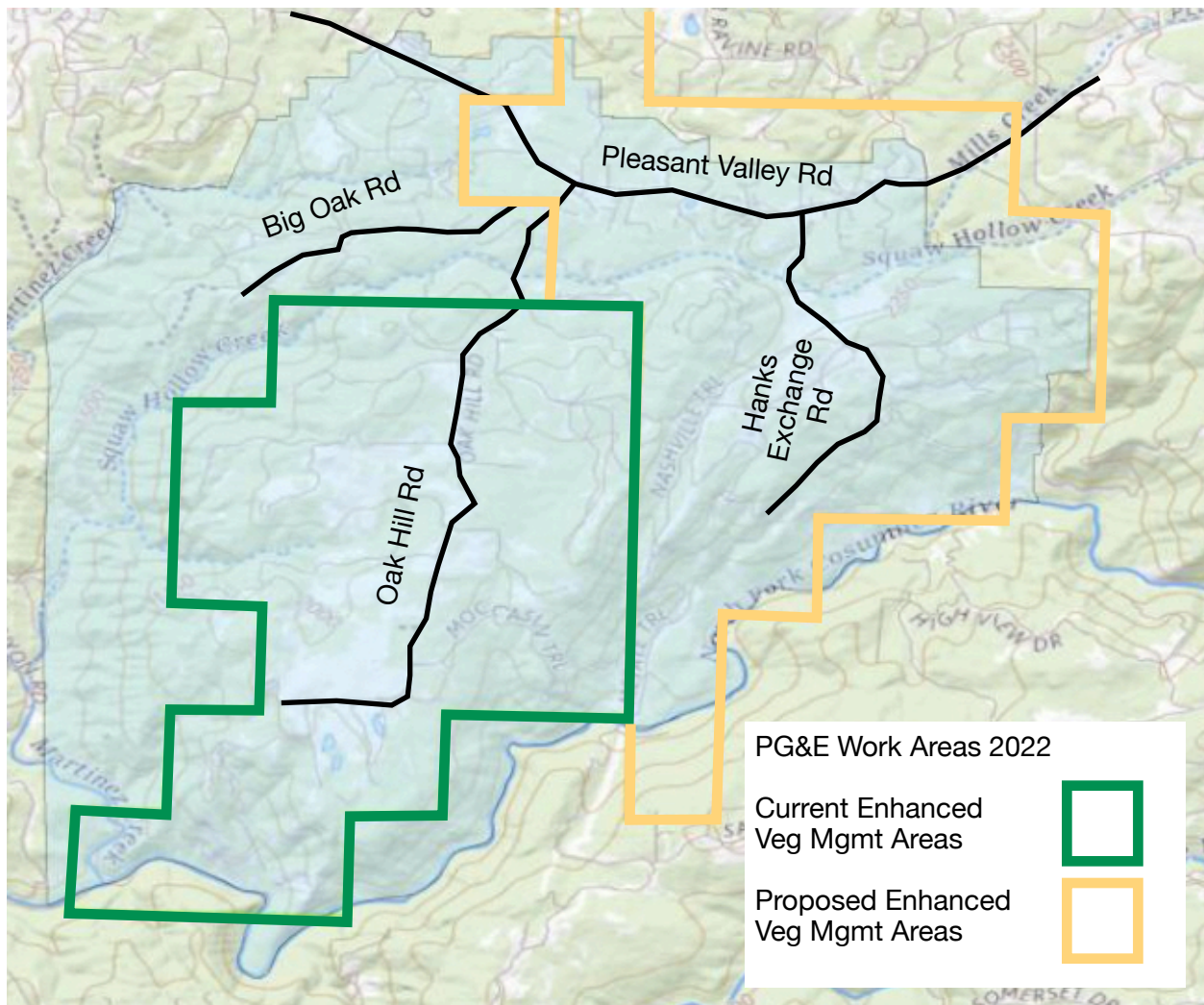


PG&E Contractors Are Working In Our Area This Summer (2022)!

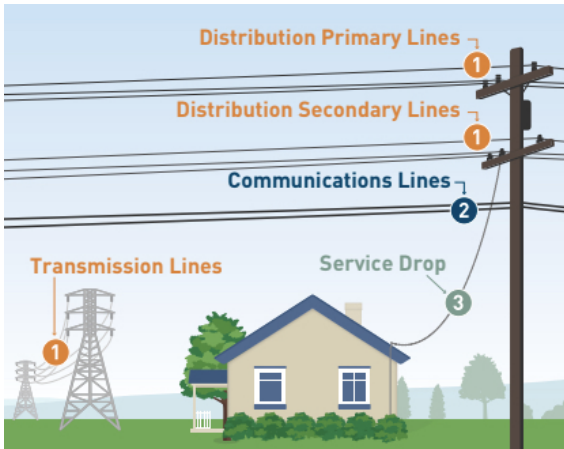
As we drive around our neighborhoods and see the many tree service workers and marked trees, folks have been asking what PG&E has planned for this summer. So I asked our local PG&E Public Safety Specialist. And here is what I learned:

This Map shows where PG&E contractors are completing **Enhanced Vegetation Management** (more about this below) Work during 2022 within our area. PG&E is already working on Enhanced Vegetation Management in the area around Oak Hill Road, generally south of Squaw Hollow Creek and west of Nashville Trail. PG&E does plan to do Enhanced Vegetation Management work in the area of Hanks Exchange and Pleasant Valley Road west to just before Zandonella Road. Areas that don't look like they will be worked on this year include Big Oak Road and Zandonella Road, and the smaller roads taking off of those collector roads (although as described below, there may be other routine work that gets done).



Now to explain about **Enhanced Vegetation Management**. PG&E actually has several different vegetation management programs which are generally tiered off of each other. And the terminology can get a bit taxing! The main power lines

are called **transmission lines**, whereas the **distribution lines** are the ones in our neighborhoods, and then there are the **service drops**, which are the power lines leading to your home. Oh, and also the **communication lines**, such as phone, cable, etc. PG&E is responsible for clearance around the **transmission** and **distribution** lines, but not the **communication** lines or the **service drops**.

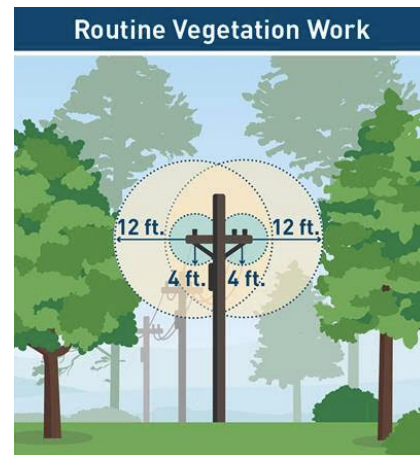


And then, they have several different levels of vegetation maintenance. **Routine Maintenance** is the annual pruning or cutting down of dead, diseased, dying and defective trees. They are required to do this work to keep us safe and the powerlines functioning.

Based on the CPUC's (Calif Public Utility Commission) Fire-Threat Hazard maps (which are different from the CalFire Fire Hazard Severity Zone maps), the amount of clearance of vegetation around power lines can vary from 1.5 feet in non High Fire Threat areas to a recommended 12 feet in



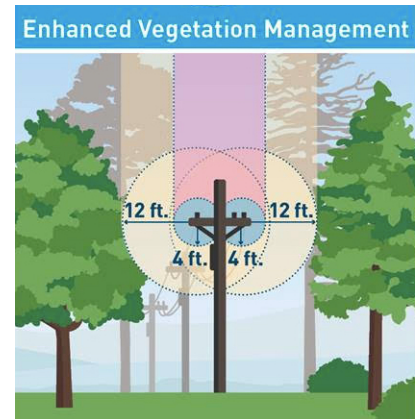
High Fire Threat areas. The entire Oak Hill Area Fire Safe Council area lies within a Tier 2 High Fire Threat District.



Generally, six months after the routine maintenance, PG&E or its contractors take on responding to **Drought and Other Tree Mortality**. This is another level of power line inspections and possible

removal of dead, dying and diseased trees that pose a hazard to the power lines. These trees may be one tree length or more away from the power lines.

And then there is **Enhanced Vegetation Management**. This combines routine maintenance with removal of dead, dying and diseased trees, plus clearance of vegetation overhanging the power lines. This is much of what PG&E is working on this year. If you want more information, check out PG&E's webpage about [Enhanced Vegetation Management](#).



So, while it might seem like PG&E or their contractors are coming to your neighborhood pretty frequently, these crews are often doing slightly different work to comply with various public rules and requirements. And there is also **System Hardening** and **Power Pole Clearance** going on as well.

What about all that wood that has been left behind?

I asked the public safety specialist about all of the tree trunks being left behind. From what I have seen, the PG&E crews have been doing a pretty good job of removing limbs and slash or chipping onsite, but I see a lot of tree trunks lying on the ground. Many folks ask to keep the wood for firewood or other purposes. The trees belong to the property owner, so PG&E can't just haul them away. However, for work done as a part of the **Enhanced Vegetation Management** program, the property owner can request that the trees be removed (this same service is not available for the other types of vegetation maintenance). PG&E's "Pro" tip is to "be specific and direct" as to what you want done with the cut wood! For more information, email wildfirewoodmanagement@pge.com or call 1-877-295-4949.

One more thing to be aware of. PG&E has been installing Enhanced Powerline Safety Settings to automatically turn off power in powerlines if a problem is detected. If an object strikes a powerline, safety equipment will detect the change in current and shut off power within one-tenth of a second. This should help to reduce wildfire ignitions due to powerline failures. But, along with this improvement, PG&E is warning us that we may experience unplanned and unannounced outages. Besides the **Public Safety Power Shutoffs (PSPS)** we have come to be familiar with, PG&E is warning about another source of power shutdowns.